

01 Company introduction

Richi Profile
Richi Advantage

02 Company honor

Cooperation Program
Qualification certification

CONTENTS

03 Product introduction

Grinding Equipment 01

Mixing Equipment 06

Pelleting Equipment 13

Cooling Equipment 17

Sifting Equipment 21

Conveying Equipment 25

Dust Collecting Equipment 27

Shunt equipment 30

Cleaning Equipment 37

Proportioning System 39

Bagging Equipment 40

Robot Palletiser 41

Storage Project 45

International Project 46

Comprehensive Feed 47

Enterprise brief Introduction

Feed Equipment Solution Expert

Integrity as foundation, innovation for growth



Headquartered in the southern foot of the scenic Yuntai Mountain of Henan province, Henan Richi Machinery Manufacturing Co.,Ltd was found in 1996, which is acknowledged as “Keeping Contract and Valuing Credit Enterprise of Henan Province” , ” Prominent Enterprise of Jiaozuo” . Our company has obtained quality system certificate of ISO9001 and CE certification, now has grown to be the Central Plains Enterprises who runs R&D and manufacture, projects design and installment in feeding project, biomass project, organic fertilizer project, silos and light steel structure project.

Richi upholds business philosophy of "Integrity as foundation, innovation for growth" and we adhere to do better and stronger in feeding equipment manufacturing by focusing on energy saving, environment clean and production efficient.

Enterprise Advantage



All key equipment like motor, reducer and bearing parts are equipped from first-class brand.

To ensure the refined products, Richi production all use CNC laser cutting, CNC bending presses, Flaming cutting machine, CNC machining center, NC shearing machine, sand blasting and baking varnish equipment.

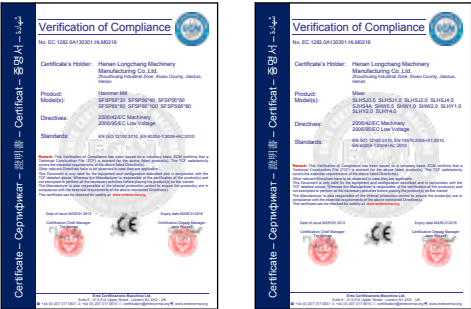
Richi has a professional installation team with skilled training. All after-sales engineers stand by 24 hours, who will respond immediately for customers' requirements.

Richi establishes two new products test bases. All new products have to go through over-loaded production to ensure 100% qualified quality before launching to the market.

Honor & Qualification



ISO9001



CE Certification

SFSP Series Hammer mill



We uphold development philosophy of energy saving, environment clean and production efficient for 18 years since the first mill have been invented. Our company has obtained a number of national patents by continuous upgrading of mill and its performance has reached international advanced level.

Stable and durable

- ◆ Widened grinding surface, fully optimized hammer arrangement, wonderful performance for micro grinding.
- ◆ Forward and reverse work of rotor, longer service life of hammer.
- ◆ High-precision dynamic balance detecting rotor, little vibration, low noise.

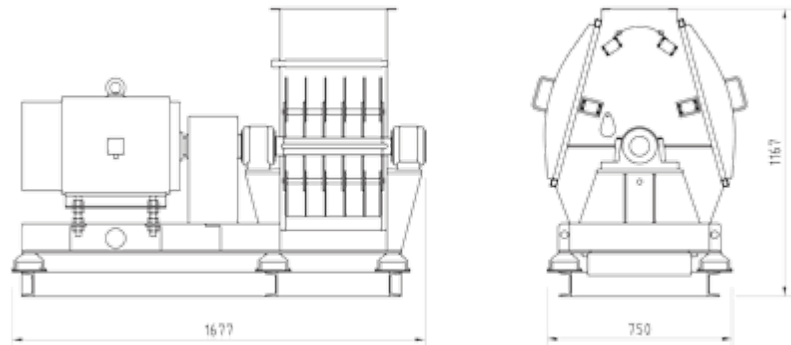
Hommization

- ◆ Movable operating door and linkage sieve press structure, more convenient for operation and maintenance.
- ◆ Equipped with safety interlocking device for safety.

Product introduction

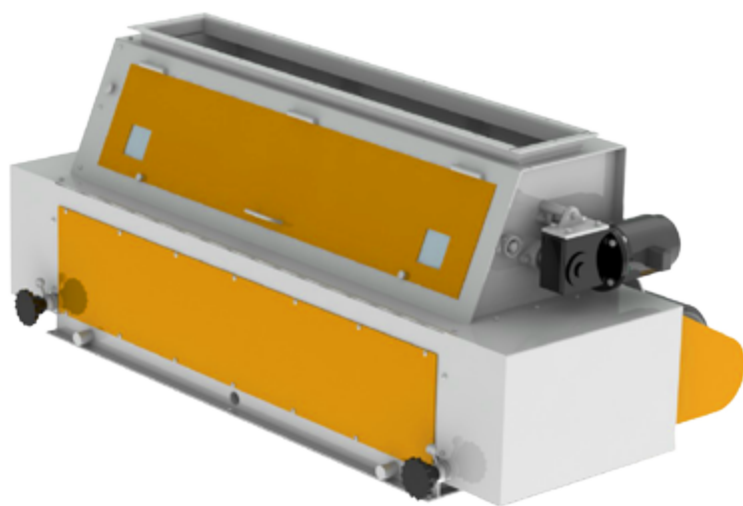
High output, low energy consumption

- ◆ Advanced teardrop-shaped crushing chamber design, reasonable structure of the secondary crushing, compared to other models production increased 25%.
- ◆ Patent shaft into the air system, small aperture material production increased more than 25%.
- ◆ Using the new adjustable pressure plate, adjustable back gauge device and tuning techniques,



Model	Size (mm)	Power (kw)	No.of hammers	Screen Hole (mm)	Capacity (t/h)
SFSP56x30	938×650×1438	18.5	18	φ3.0	3-4
	938×650×1438	22	18	φ3.0	3-4
SFSP56x40	991×982×1637	30	22	φ3.0	5-6
	991×982×1637	37	22	φ3.0	5-6
SFSP56x60	715×978×2057	45	22	φ3.0	5-6
	715×978×2057	55	34	φ3.0	6-10
	/	75	34	φ3.0	6-10
SFSP66x80	1150×1340×2548	90	96	φ1.0	6-8
	1150×1340×2548	110	96	φ1.0	7-9.5
SFSP66x100	1340×1150×2800	132	120	φ1.0	8-11
	1340×1150×280	160	120	φ1.0	11-12

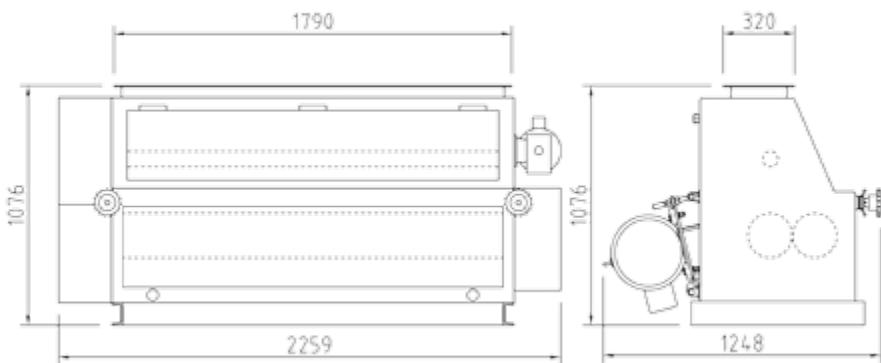
SSLG Series Crumbler



- ◆ Widely used in livestock and poultry pellet, crushing of aquatic pellet feed.
- ◆ Three-roll structure as feeding stick, fast rolls, slow rolls, two roll structures composed of only fast roller and slow roller.
- ◆ Unique different principle of tooth of double roll Φ 1.5-5.0mm particle crushing, high yield, less grade material return.

Product introduction

- ◆ X-type shrimp feed particle converter feed motor-driven feed roller, feeding more evenly, and can realize automatic control.
- ◆ Imports for key components, which have reliable performance and convenient operation and maintenance.
- ◆ According to customers' different needs, crushing granularity can be equipped with special tooth form breaking rollers.



Model	Power (kw)	Size(mm)	Roll number	Capacity (t/h)
SSLGL15x150	7.5	1851×976×570	2	7-10
SSLGL15x150	7.5	2039×1014×770	3	7-10
SSLGL20x170	15	2258.8×1076×1212	3	10-15

TWLY Series Rotary Feeder



Auxiliary feeder

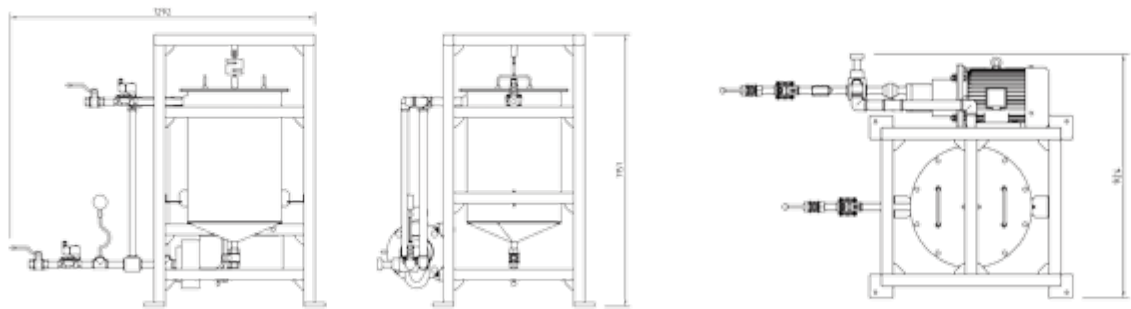
- ◆ A fine crusher feed device, suitable for all kinds of pellet and powder feeding device.
- ◆ Adopts frequency converters to adjust the feeding speed, make the mill always at full load under the condition of reducing energy consumption.
- ◆ Set the iron removal equipment near discharging mouth, in order to make sure to provide clean material.
- ◆ Feeding hole offset, cylinder with rigid material automatically, so as to avoid material card between the blade and the enclosure wall, or cause damage to the rotor suppress machine.
- ◆ Discharging uniform feeding, ensure the mill width uniform feeding, to maximize efficiency of Hammer mill, extend use life of hammer and screen.

Model	Power (kw)	Capacity (m³/h)	Motor series	Gear ratio	Size (mm)	Speed (r/min)
TWLY25×40	1.1	16-35	4	60	797×756.5×570	15-25
TWLY25×60	1.1	27-50	4	60	797×756.5×570	21-36
TWLY25×80	1.5	32-70	4	60	794×1156.5×570	21-36
TWLY25×100	1.5	45-85	4	60	794×1356×570	21-36
TWLYS25×60	1.1×2	55-100	4	40	/	21-36

STJG Series Intermittent Liquid Adding System

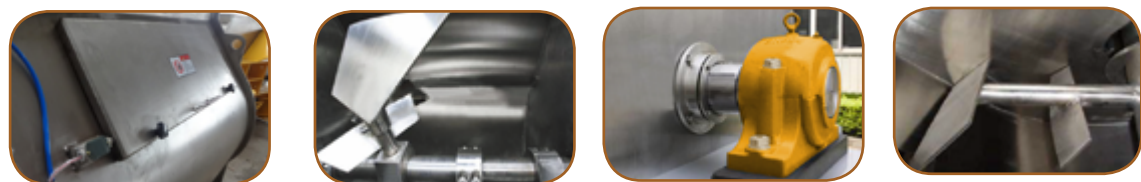


- ◆ Applied to each batch of 100, 200, 500, 1,000, 2000, 3,000 kg of mixed add a variety of oils and other liquid nutrients.
- ◆ Microcomputer automatic control, triple coverage, accuracy and reliability. liquid temperature and liquid level can automatic control in Tank
- ◆ Equipped with auxiliary booster device, eliminating stops spraying nozzle dripping oil, avoiding material agglomeration problems.



Model	Powe (kw)	The gas velocity (L/min)	Motor series	Size (mm)
STJG50	2.2×2	50	6	680×1135×775
STJG100	4	100	4	880×1500×840
	2.2	100	6	/
STJG200	4	200	4	/
	7.5	200	4	1559×2147×1198

SJHS Series Double-circle paddle Mixer



Check by the State General Administration of quality supervision inspection, mixed evenness 97.7% (the C.V. 2.3%), normal residue ≤ 0.1%, tons of power consumption is only 0.3kW.h/t. Filling coefficient variable scope is 0.4~1, widely used in many industries in the different proportion, size and other materials mixed.

High uniformity

- ◆ International patent double rotor design, mixed with 97.7%, short mixing time.
- ◆ Equipped with a large section return air tube to reduce dust and prevents material segregation.

Product introduction

No residues

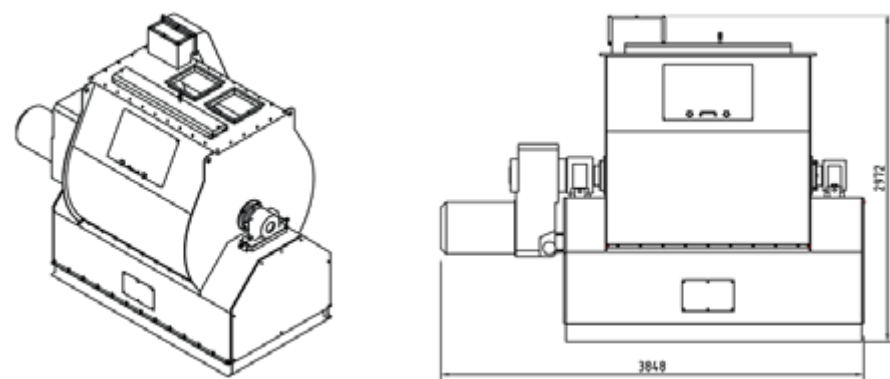
- ◆ Full discharge ensures that residual rate ≤ 0.1%, preventing cross-contamination.

No leakage

- ◆ Discharging use silicone seal, shaft-side with specially designed packing seal, ensure no leaks.

Hommization

- ◆ Large access door, reasonable design, convenient cleaning maintenance, saving time
- ◆ Access door with limit switch can ensure worker safe



Model	volume (m³)	Size (mm)	Mixed weight (kg/p)	Power (kw)	Fullness coefficient	CV
SJHS1A	1	/	500	11/15	0.4 ~ 0.9	≤ 3
SJHS2A	2	/	1000	18.5/22	0.4 ~ 0.9	≤ 3
SJHS4A	4	3859×2249×2812	2000	37/45	0.4 ~ 0.9	≤ 3
SJHS6A	6	/	3000	55	0.4 ~ 0.9	≤ 3

SLHSJ Series Twin–Shaft paddle Mixer



Wide range of application

◆ Applicable to a wide range of industries materials mixing, large effective volume in body; also can add a variety of liquids (such as water, molasses, oil, etc).

Good quality

◆ Smooth, gentle mixing, do not damage the original characteristics of materials.

High production efficiency

◆ Mixed short time (45-60/batch), mixed with coefficients of variation (CV) is less than 5%, and tons of small power consumption.

Product introduction

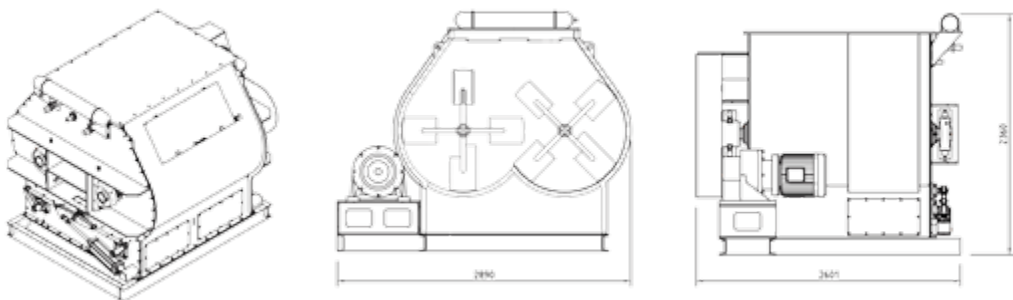
less residue

◆ Original "machine full length double door" patented technology, the material quickly and maximum reduction residues.

Hommization

◆ Large access door, reasonable design, convenient cleaning maintenance, saving time.

◆ Access door with limit switch can ensure worker safe.



Model	volume (m³)	Size (mm)	Mixed weight (kg/p)	Power (kw)	Fullness coefficient	CV
SLHSJ0.5	0.5	1487×1514×1447	250	5.5/7.5	0.4 ~ 0.9	≤ 5
SLHSJ1.0	1	2037×2161×1572	500	11/15	0.4 ~ 0.9	≤ 5
SLHSJ2.0	2	3330×2618×2023	1000	18.5/22	0.4 ~ 0.9	≤ 5
SLHSJ3.0	4	/	1500	22	0.4 ~ 0.9	≤ 5
SLHSJ4.0	4	3149×2772×2210	2000	30/37	0.4 ~ 0.9	≤ 5
SLHSJ7.0	7	/	3500	45	0.4 ~ 0.9	≤ 5

SHW Series Double Ribbon Mixer

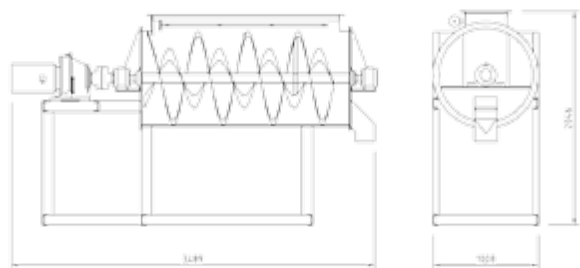


High uniformity

- ◆ Cross section of cylinder round, mixing without dead corner, 2-4 minutes mixing time, wall of no plot;
- ◆ Enlargement in length opened discharge door at the bottom to reduce residues;
- ◆ Mixed uniformity: coefficient of variation is less than 7.

Safety

- ◆ Opening angle greater than 90 degrees, the door self-locking, discharge doors do not open at cylinder pressure loss;



Model	volume (m ³)	Size (mm)	Mixed weight (kg/p)	Power (kw)	CV
SHW1.0	1	3516×1008×2016	500	7.5	≤ 7
SHW2.0	2	4260×1256×2349	1000	11	≤ 7

SLHY Series Double Ribbon Mixer



Advanced technology

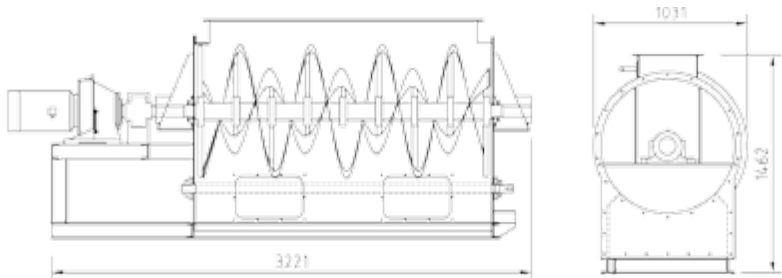
- ◆ Patented product, national initiative;

High uniformity

- ◆ Cross section of cylinder round, mixing without dead corner; barrel wall plot-free, side discharge and direct pack;
- ◆ Mixed: uniformity of variation ≤ 7, mixing time: 2-3 min;

Wide range of application

- ◆ Widely used in medium and small feed plant and farming industries



Model	volume (m ³)	Size (mm)	Mixed weight (kg/p)	Power (kw)	CV
SLHY1.0	1	3221×1041×1460	500	7.5	≤ 7
SLHY2.0	2	3258×1821×1742	1000	15	≤ 7

SZLH Series Pellet Mill



Richi has developed SZLH Pellet Mill successfully by combination of conventional European mill of double motor and gear machine. Our pellet mill take both advantages of belt and gear drive, improve its weakness meanwhile, and make the pellet production high efficient, faster and energy saving. LoChamp have made great contribution for feed pelletizing.

Currently it has been formed pelletizing series which including livestock and poultry feed, ruminant feed and aquatic feed.

Product introduction

Flexible transmission mode, safe and efficient

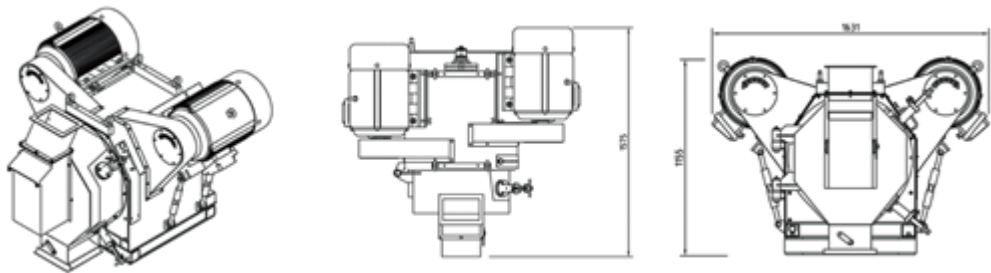
- ◆ Can be achieved adjustable speed easily by replacing the pulley
- ◆ Triangle with double motor drive system, smooth rotation, low noise and without lubrication.

Practical and durable

- ◆ Compared with gear machine, the spindle bearing is more durable, no oil leakage phenomenon.
- ◆ The starting current is half gear machine as double motors, and little influence on power grid.
- ◆ The support bar and main shaft forging together, rigidity improved, pressure roller and main shaft integrated to ensure the parallelism of pressure roller eccentric shaft and ring die axis installation, also keep the roller and ring die gap uniformity, whatever old or new machine, roller always stay parallel to the ring die, so the production efficiency is like new.

Multiple choices, Wide application

- ◆ Can be used for livestock and poultry feed, ruminant feed, fish feed.



Model	Inner Dia.of Die	Roller diameter (mm)	Power (kw)	Capacity (t/h)	Size (mm)
SZLH25	250×75	104	2×11	0.4-1	970×1055×1069
SZLH35A	350×100	168	2×30	3.5-5	1068×1119×142
SZLH42A	420×138	204	2×55	3-12	1592×1589×1976
SZLH52A	520×176	250	2×75	5-18	1398×1672×2103

Auxiliary Conditioner



Good material

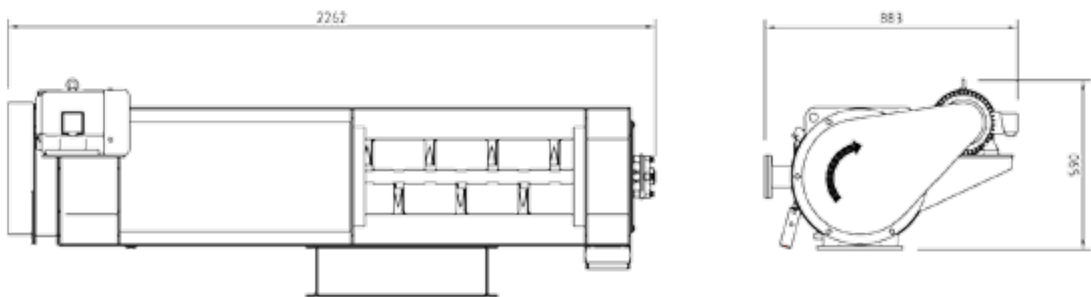
- ◆ All stainless steel, corrosion resistance, safety and health.

High quality

- ◆ Tempering machine blade was made from alloy material, high wear resistance for long service life.
- ◆ The upper structure high speed stirring, even tempering; the lower speed, to extend the time of thermal conditioning.

Product introduction

- ◆ The tempering time two time than ordinary double one, tempering better effect.
- ◆ Epigranular pellet, low material residues, greatly reduce the cross contamination.
- ◆ With a set of thermal insulation layer, reduce steam consumption and environment protection, more benefit at material aging and sterilization.



Model	Size (mm)	tempering time(scc)	Power (kw)	Capacity (t/h)
TZJ32x200	2255×793×719	32-54	2.2	3-5
TZJ40x280A	3110×1009×753.5	49-98	5.5	8-16
TZSJ32x200	2255×793×1203	64-108	2.2×2	3-5
TZJS40x280A	3110×1009×1359	98-196	5.5×2	8-16

SKLNW Series Full Circular Cooler



National initiative patent number: 201, 120, 166, 690. x

our cooler with round and no residue is national initiative patent product, get higher cooling efficiency by improve conventional one and increase the air intake air. No residue design was achieved by reduce the interface of material and equipment.

Make cooling full, prolonged of material storage

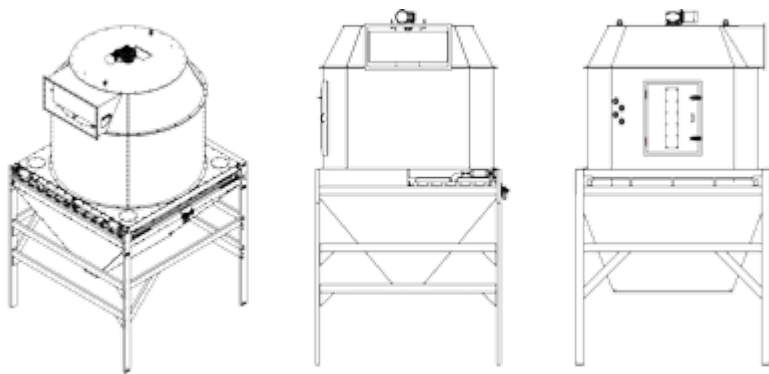
- ◆ Using the principle of counter flow cooling pellet with high temperature, high humidity, avoid direct contact with cold wind and hot pellet, which can effectively prevent the particles from surface cracking
- ◆ Material temperature not higher than + 3 °C at room temperature after cooling, moisture reduce not less than 3.95%

Product introduction

- ◆ Cooler with all round, no dead corner, Items dropped more uniform on the section, and even cooling
- ◆ The new rotary distributor ensure material surface height difference is less than 100mm, which make air output same in cooling section and the material even cooling;
- ◆ Nesting material is no rub, squeeze, avoiding the fragmentation of granules.

Fence stripper agencies, Humanization design and long service life

- ◆ The equipment has access door in the front, which facilitate regular maintenance and inspection
- ◆ Pneumatic discharge compared with conventional, it does not frequently starting motors that cause high energy consumption, saving 80%
- ◆ Increased air intake area (10 times), cooling fan resistance decreases, and saving energy consumption 20%
- ◆ Replace materiel no residues, avoid cross-contamination of materials;
- ◆ Applies to pellet cooling that the length is less than 40mm



Model	Power (kw)	Capacity (t/h)	After cooling temperature	Size (mm)
SKLNW20	0.75	8-15	≤ RT+3℃	2444×4776×2312
SKLNW25	0.75	15-20	≤ RT+3℃	2874×4848×2732

SKLN Series Counterflow Cooler



Make cooling full, prolonged of material storage

- ◆ Advanced theory of countercurrent cooling, widely applied in feed pellet cooler, such as Granulation, Expansion , extruder, expanded and so on.
- ◆ Octagonal section into the cooler ensures no death corner and is propitious to material cooling

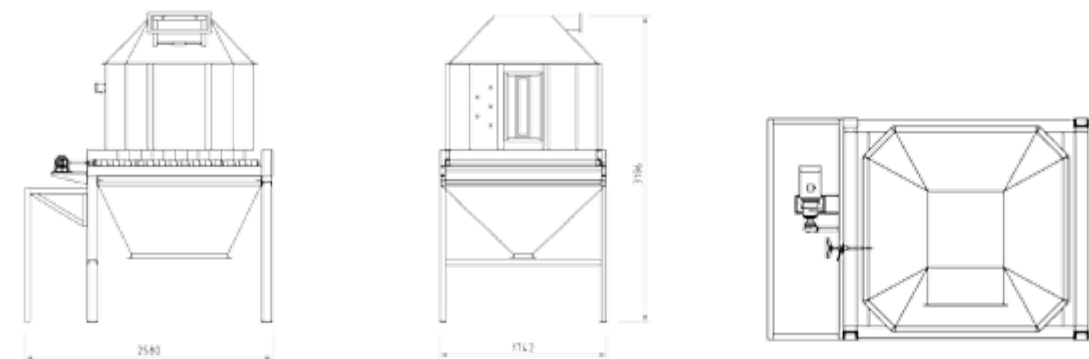
Fence stripper agencies, discharging uniformity

- ◆ Using reciprocating linear motion of discharge, smooth and uniform discharge flow.
- ◆ Overall layout of vertical, simple and beautiful

Product introduction

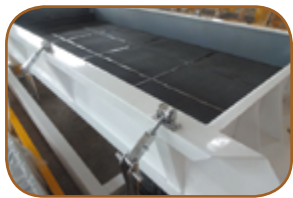
Humanization design, long service life

- ◆ The equipment has access door in the front, the side and top cover have viewing window for easy observation and inspection
- ◆ Discharge fitted with pressure plate, improving the work of unloading, reducing distortion, extend the life of the part.
- ◆ Drive unit with gear motor drives eccentric, drives smooth and reliable, low noise, it is easy to installation and maintenance



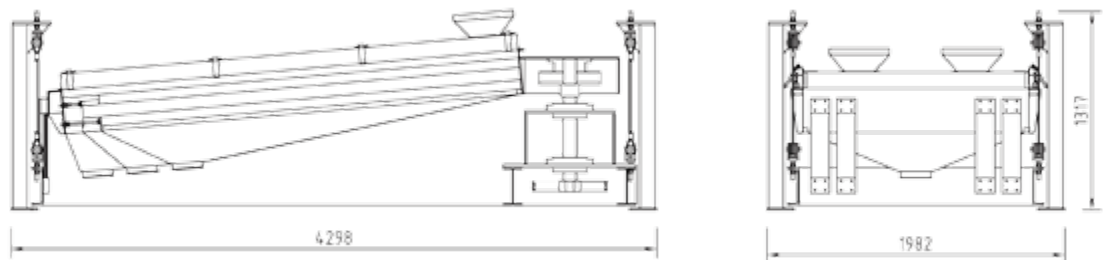
Model	Power (kw)	Capacity (t/h)	After cooling temperature	Size (mm)
SKLN11	0.75	3	≤ RT+3℃	1325×2516×1384
SKLN15	1.5	7	≤ RT+3℃	1722×3196×2470

SFJH Series rotatory grading sifter



- ◆ Applies to the Pellet, crushing pellet and secondary circulation grinding process
- ◆ Use of v-belt transmission focus on balancing body and tail of the elastic support, material in horizontal work surface rotary motion, high filtering accuracy, small vibration.
- ◆ Streamline design within the outlet, do not make the material deposited, avoiding cross contamination.
- ◆ Pressure screening agency firm, rapid screening.
- ◆ Be able to customized single-layer screen, dual-screen and three-storey screen.

Product introduction

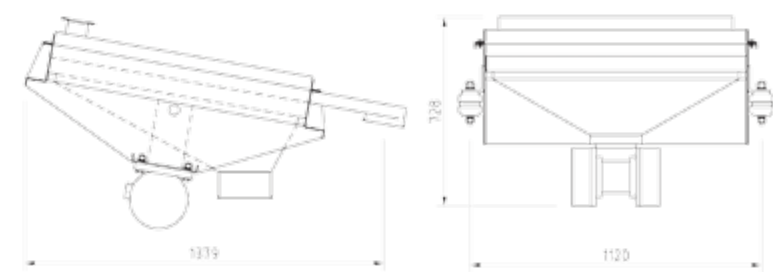


Model	Power (kw)	Capacity (t/h)		Size (mm)
		Pellet	Mash	
SFJH80×1C	2.2	5-8	3-6	2793×1200×990
SFJH80×2C	2.2	5-8	3-6	2881×1290×1112
SFJH80×3C	2.2	5-8	3-6	2973×1290×1303
SFJH100×1C	2.2	8-13	6-10	3345×1510×1307
SFJH100×2C	2.2	8-13	6-10	3433×1510×1307
SFJH100×3C	2.2	8-13	6-10	3521×1510×1307
SFJH130×2C	3.0	10-16	8-14	3223×1845×1317
SFJH130×3C	3.0	10-16	8-14	3489×1845×1317
SFJH150×2C	3.0	20-26	18-20	4096×1980×1317
SFJH150×3C	4.0	20-26	18-20	4411×1980×1317
SFJH180×1C	7.5	25-40	20-30	/
SFJH180×2C	7.5	25-40	20-30	/
SFJH200×1C	7.5	30-48	24-36	/
SFJH200×2C	7.5	30-48	24-36	/

SFJZ Series Vibrating Sifter



- ◆ Driving method using self-balance vibration, good sieving effect, small size, smooth operation
- ◆ The streamline design within the outlet, do not materials deposition, avoiding cross contamination.
- ◆ Pressure screening is simple and convenient and rapid screening.
- ◆ Be suitable for premix material of pre-clean (generally on the inlet)

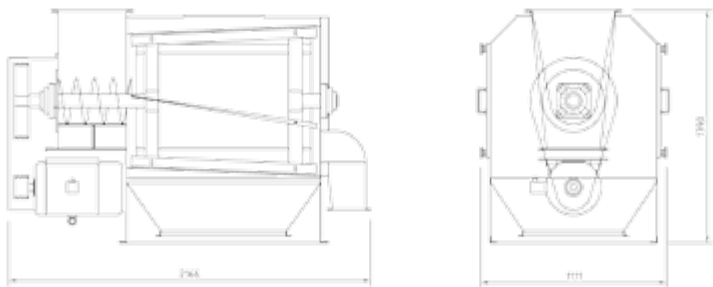


Model	Power (kw)	Capacity (t/h)	Amplitude (mm)	Size (mm)
SFJZ60	0.18	1-3	2-4	1165×738×634
SFJZ60A	0.18	1-3	2-4	1357×720×708
SFJZ100A	0.25	5-8	2-4	1460x1120x728

SCQZ Series Conical Drum Mash Pre-cleaner

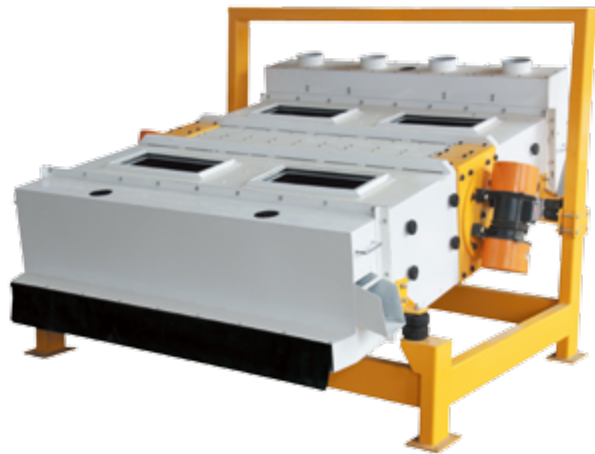


- ◆ Used for powder material in pre-clean, effectively crushed powder agglomeration, separation of stones mixed, the machine can also be used to mix materials sifter, clearing away from the shape.
- ◆ With high yield, good cleaning effect, small power consumption, simple structure, small size, and other characteristics.
- ◆ Device to open the access door is convenient for daily maintenance, overhaul and sieve tube replacement.
- ◆ According to the material nature matching suitable sieve, to achieve the best effect.



Model	Power (kw)	Capacity (t/h)	Motor series	Size(mm)
SCQZ60	5.5	30-50	6	1150×826×1685
SCQZ90	11	40-70	6	2166×1111×1500

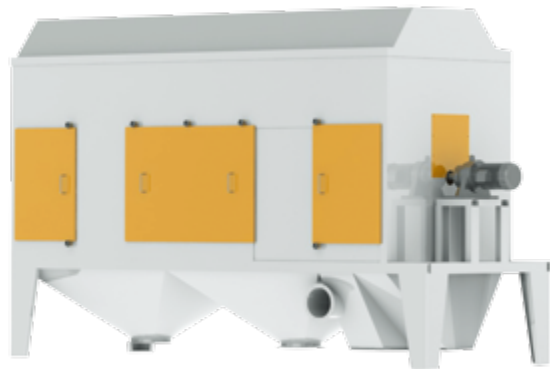
TQLZ Series Vibrating Cleaner



- ◆ Low noise, low energy saving and stable operation.
- ◆ This machine can be used on the cleaning of soya bean, maize, wheat and rice.
- ◆ Compact structure design, good seal up.
- ◆ Driven by vibration motor.

Model	Power (kw)	Capacity (t/h)	Motor series	Size (mm)
TQLZ200×200	1.1×2	32-40	6	2570×2110×2630

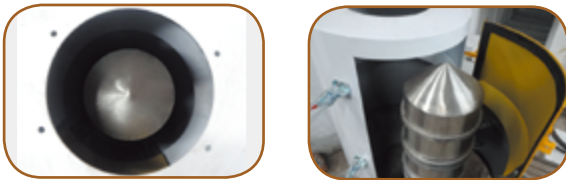
SCQY Series Drum Pre-cleaner



- ◆ Applies to food, feed and processing of raw grain cleaning, food warehouses and other industries. To clean up corn, wheat, rice and soybean in raw grain, such as wheat straw, corn leaf, corn on the cob, straw, stone, rope and other lumber..
 - ◆ High output, good effect in cleaning, small power consumption, simple structure, small footprint.
 - ◆ According to the material nature matching suitable sieve, to achieve the best effect.
- Humanization design
- ◆ Device to open the access door is convenient for daily maintenance and repair, and a cylindrical screen and easy to change.
 - ◆ Side and top cover to open the two observation Windows, ease for observation equipment operating conditions.

Model	Power (kw)	Capacity (t/h)	Motor series	Weight (kg)
SCQY63×1C	0.75	40	4	840×1380×1799
SCQY90×1C	0.75	40-60	4	1320×2213×2803
SCQY90×2C	0.75	40-60	4	1320×1913×2803
SCQY120×2C	1.5	60-80	4	1530×2600×4000

TCXT Series Permanent Magnet Sleeve



- ◆ Strong separation of magnetic metal inclusions in raw materials
- ◆ Cores using the latest development of rare-earth permanent magnetic materials, magnetic field strength ≥ 3000GS, iron removal efficiency ≥ 99%
- ◆ Without power, integrated reach international advanced level.

Model	Magnetic induction	Removal of iron	Size (mm)
TCXT20	≥ 0.3%	≥ 99%	φ436×744
TCXT25	≥ 0.3%	≥ 99%	φ474×803
TCXT30	≥ 0.3%	≥ 99%	φ540×920

TFXH Series Recycling Cyclone Separator



- ◆ TFXH series Recycling Cyclone Separator is cleaning equipment specialized for suction impurities such as dust or hull from the grain. The product can be used alone, or combined with the shaker, protary sieve or horizontal wheat machine.
- ◆ The equipment could form two-times closed wind, which easily help the light impurities successfully excluded.
- ◆ dust chamber can enhance sedimentation.
- ◆ The machine comes with a fan, automatic air circulation to separate the light impurities in food grain which has a good Wind separation effect.

Model	Power (kw)	Air volume (m³/h)	Motor series	Size (mm)
TFXH200	3x2+1.5	6000-8000	2	2257×3256×900

High Pressure Jet Filter Dust Collector Series



- ◆ Adopt TDFK type high pressure solenoid valve, Increase air blowing ,the dust removal effect is good, air intakes in the above ash hopper, To avoid the dust air washing bag directly, improve the use life of the bag.
- ◆ Adopt bag fast loading and unloading mechanism patent technology, The upper space can reduce the height of 1.5 meters when open the door, we can quickly remove the filter bag one by one.
- ◆ The unique blowing device, using open remove type bag structure, easy to repair
- ◆ The filter area of each bag is 1 square meter high and it can greatly reduce cover area.

Model	Power (kw)	Air volume (m³/h)	Motor series	Size (mm)
TBLM4Y	1.5	2100-2300	2	1056×745×1314
TBLM36Y	N	4320-8640	2	1712.5×1590×2550
TBLM48Y	N	5400-10800	2	1990×1712.5×2550
TBLM4	1.5	360-720	2	885×1246×1755.5
TBLM9	2.2	1080-2160	2	932×1905×1756
TBLM12	3	1440-2880	2	857×2315×1756

TWLL Series Screw Conveyor



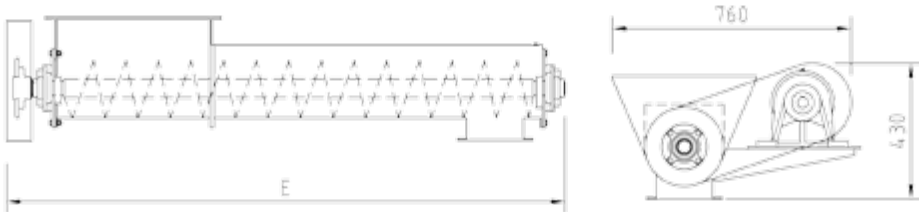
- ◆ Small size, high speed, feeding even, good accuracy, remains low.
- ◆ Import diameter of blade pitch arrangement to ensure overall discharge of materials within bin.
- ◆ Optional Plugging material alarm, speed alert.

Model	Power (kw)	Capacity (t/h)	Gear ratio	Size (mm)	The frequency of transducer
TWLL16A	0.75	5-7	11	1563x560x452	40
TWLL20A	1.5	12-14	11	1589.2×555×654	40
TWLL25A	1.5	25-30	17	1587.5×560×705	40

Screw Feeder series



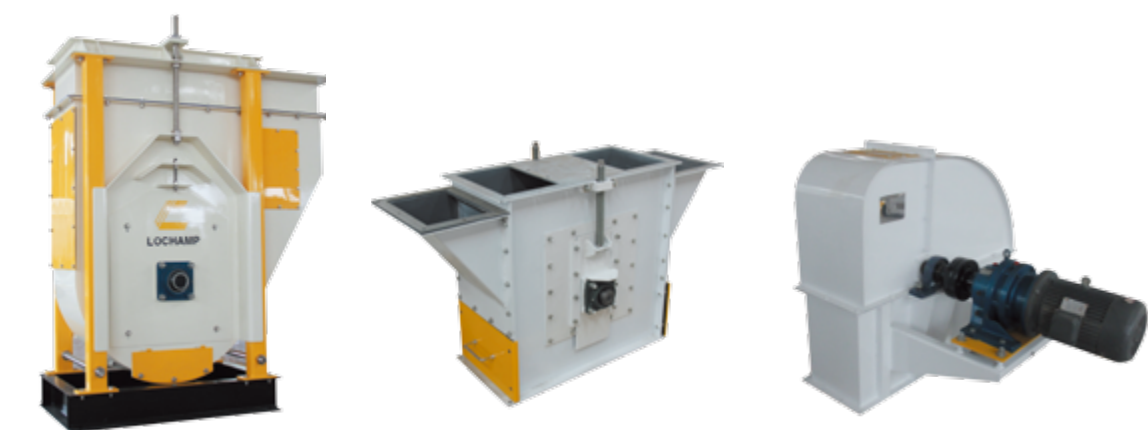
- ◆ Small size, high speed, feeding even, good accuracy, remains low.
- ◆ Import diameter of blade pitch arrangement to ensure overall discharge of materials within bin.
- ◆ Optional Plugging material alarm, speed alert.
- ◆ Carrying capacity, safety and reliability.



- ◆ Adaptable, it is easy for installation and maintenance, long service life, It can be used in wide range of transport on powdery, granular and small block materials level and small inclination (0° ~ 20°) .
- ◆ Machine of small size, low noise, position of in-outlet is flexible arrangement.
- ◆ Optional Plugging material alarm, speed alert.

Products	Model	Capacity (t/h)	Power (kw)	Lifting angle	Pitch (m)
Batching conveyor "U" type	TLSS133	2-3	1.5	0-60°	0.106
	TLSS12	2-3	1.5	0-10°	0.096
Batching conveyor "O" type	TLSS16	6-7	2.2	0-10°	0.128
	TLSS20	10-15	2.2	0-10°	0.160
	TLSS25	20-25	3	0-10°	0.200
	TLSS32	30-35	4	0-10°	0.256
	TSLL16	3-6	2.2	0-60°	0.128
Screw conveyor "O" type	TSLL20	10-15	2.2	0-60°	0.160
	TSLL25	10-15	2.2	0-60°	0.200
	TSLL32	30-35	3	0-60°	0.256
	TSLL16	3-6	2.2	0-10°	0.128
Screw conveyor "U" type	TSLL20	10-15	2.2	0-10°	0.160
	TSLL25	10-15	3	0-10°	0.200
	TSLL32	30-35	4	0-10°	0.256
	TLSE16	3-6	2.2	0-60°	0.128
Closed type Screw conveyor	TLSE20	10-15	2.2	0-60°	0.160
	TLSE25	20-25	3	0-60°	0.200
	TLSE32	30-35	4	0-60°	0.256
	TLSE16	3-6	2.2	0-60°	0.128

TDTG Series Bucket Elevator



Feature

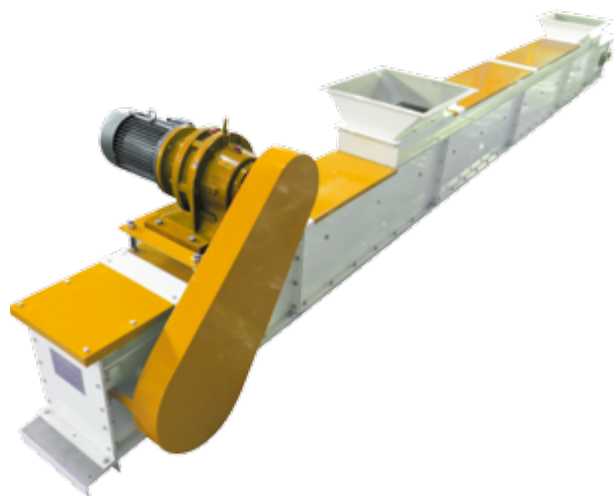
- ◆ With a split head wheel that greatly reducing cost of replacing his head round rubber and workload
- ◆ Barrel uses proprietary undercut in production process, which forming a rigid and the sealing property is superior, beautiful and no deformation
- ◆ Choicing tail wheel structure style, ensuring optimal adaptability.
- ◆ A full range of security configuration to ensure optimal use and security.

The scope of application

- ◆ Classic models, passed the European CE safety certification, widely used in feed, chemicals, grain depots, ports, malt, oil industry powder and small particles of material vertical lifting.

Model	Power (kw)	Conveying capacity (m³/h)	Belt line speed (m/s)	Conveying height (m)
TDTG 26/18	2.2	20	1.23	3-10
	3	20	1.23	10-20
	4	20	1.23	20-35
	5.5	20	1.23	35-56
TDTG 40/23	3	50	1.71	3-9
	4	50	1.71	9-15
	5.5	50	1.71	15-23
	7.5	50	1.71	23-35
	11	50	1.71	35-54
TDTG 40/28	3	60	1.71	3-8
	4	60	1.71	8-12
	5.5	60	1.71	12-19
	7.5	60	1.71	19-29
	11	60	1.71	29-45
TDTG 50/23	3	60	2.14	3-7
	4	60	2.14	7-12
	5.5	60	2.14	12-19
	7.5	60	2.14	19-28
	11	60	2.14	2-43
	15	60	2.14	43-55
TDTG 50/28	3	70	2.14	3-6
	4	70	2.14	6-10
	5.5	70	2.14	10-16
	7.5	70	2.14	16-23
	11	70	2.14	23-36
TDTGK 63/28	15	70	2.14	36-51
	5.5	120	2.87	3-8
	7.5	120	2.87	8-12
	11	120	2.87	12-19
	15	120	2.87	19-27
	18.5	120	2.87	27-3
	22	120	2.87	33-40
	30	120	2.87	40-56

TGSS Series Scraper Conveyor



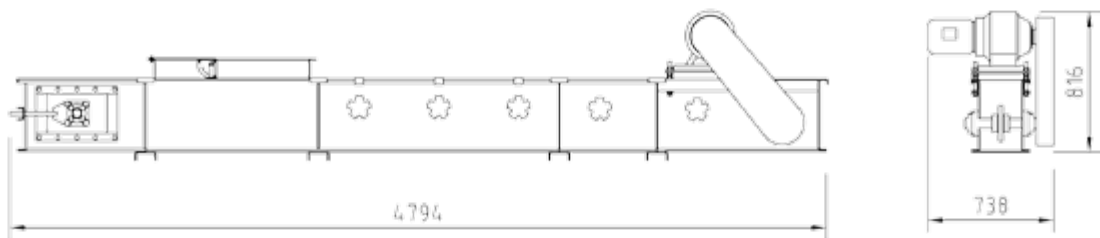
Features

- ◆ Shaft end using the latest packing seal, ensure that no leakage
- ◆ erformance. Feed inlet have feed plate device, which can adjust feed rate, to ensure the scraper conveyor's best working state, to coordinate working equipment before and after.
- ◆ Tail set has an active body, minimizes the residual; flexible scraper and chain set back to the cup, minimizing reduce the conveying machine head material residue.
- ◆ Modular design, easy disassembly and Assembly replaced.

Scope of application

- ◆ Classic models, passed the European CE safety certification, widely used in feed, chemicals, grain storage, oil industry, port and malt powder and small particulate matter level of transmission.

Product introduction



Model	Power (kw)	Chain speed (m/s)	The transportation distance (m)	Conveying capacity (m³/h)
TGSS20	2.2	0.32	3-8	40
	3	0.32	8-18	40
	4	0.32	18-29	40
	5.5	0.32	29-47	40
	7.5	0.32	47-71	40
TGSS25	3	0.32	3-11	65
	4	0.32	11-18	65
	5.5	0.32	18-29	65
	7.5	0.32	29-44	65
	11	0.32	44-70	65
TGSSK32	4	0.45	3-12	97
	5.5	0.45	12-19	97
	7.5	0.45	19-29	97
	11	0.45	29-46	97
	15	0.45	49-66	97

TFPX Series Rotary Distributor



- ◆ Applies to the distribution of powder and granular material.
- ◆ Mechanical locking structure, which oriented material bend position accurate and reliable, automatic removal dust from the machine, compact structure, small footprint, easy maintenance.

Model	Power (kw)	Inside diameter (mm)	Capacity (t/h)	Weight (kg)
TFPX4	0.37	φ220	30-60	224
TFPX6	0.37	φ220	30-60	224
TFPX8	0.37	φ220	30-60	275.5
TFPX10	0.37	φ220	30-60	342
TFPX12	0.37	φ220	30-60	383
TFPX4	0.37	φ300	60-100	/
TFPX6	0.37	φ300	60-100	/
TFPX8	0.37	φ300	60-100	/
TFPX10	0.37	φ300	60-100	/
TFPX12	0.37	φ300	60-100	/

Three-way Round Valve/Gate Series



- ◆ three way square valve, it saves a head and reduce the installation height, cost saving.
- ◆ Applied to the feed, flour, food, chemical, mining, metallurgy, cement and other industries controlled material flow.
- ◆ Cylinder or manually driven, is clean.
- ◆ Airtight , not leaking.
- ◆ Simple structure, easy to install.

Model	Power (kw)	Cylinder	Capacity (m³/h)		Size (mm)
			Mash	Pellet	
TBDDY22P	0.06	/	45	50	677×327×48
TBDDY25P	0.06	/	70	80	758×432.5×524
TBDDY22	0.06	/	45	50	655×394×494
TBDDY25	0.06	/	70	80	777×369×518
TBDQY22P	/	SC40*125-S	45	50	622×353×481
TBDQY25P	/	SC40*125-S	70	80	635×383×524
TBDQY22	/	SC40*125-S	45	50	646×352×373
TBDQY25	/	SC40*125-S	70	80	669×383×385
TBDQ30	/	SC32*125-FA	80	100	753×393×800
TZMD25	0.37	/	80	100	840×472×243
TZMD32	0.37	/	120	150	960×507×243
TZMQ25x25	/	SC50×250	80	100	1019×330×186
TZMQ32x32	/	SC50×300	120	150	1193×400×186
TZMQ50x50	/	SC50×500	180	200	1553×580×186

PLC Series Proportioning System



PLC series proportioning system is a set of control and management in the integration of intelligent computer system, superior performance, stable and reliable,It can be widely used in flour, feed, compound fertilizer ingredient control, construction and other industries.

This product compose of imports industrial computer, operating floor, simulation screen, and the scale combined into a complete set of control system

It also Flexible controlled according to request to achieve a computer one scale, two scales, and three scales, or multiple scales.

Model	Weigh (kg/p)	Precision (%)
LCS0.3	150	(Static) 0.1%FS (Dynamic) 0.3%FS
LCS1.0	500	
LCS2.0	1000	
LCS4.0	2000	

BCP Series Automatic Bagging Machine



- ◆ Unique anti-shock devices to ensure measurement accuracy, fast packaging, and able to work in stable under complex working condition.
- ◆ In external regulation machinery, It is convenient to repair.
- ◆ The Key parts adopt imported, long service life, strong anti-interference ability.
- ◆ Modify some code digital calibration fall at any time and tracking automatically at zero .
- ◆ Belt feeding scale is suitable for packing powder and granular, screw feeding scale is only applicable to packaging of powder.

Model	ZZP-50	ZZLP-50	ZZX-50	ZZLX-50	ZZ-50	ZZL-50
Size (mm)	2500×2700 ×1556	2500×2700 ×2800	1742×900 ×2594	2500×2700 ×2596	/	/
Static Precision	Ref(0.5)× (0.5)					
Dynamic Precision	10g	10g	10g	10g	10g	10g
Power/Gas	AC 380V 50HZ 0.4-0.8 Mpa					
Power (kw)	1.5	1.5	2.2×2	2.2×2	/	/
Bagging Speed (Bag/h)	200-300	300-500	150-250	240-400	200-350	400-700

LOP Series Robot Palletiser



Unique linear executing mechanism

- ◆ Ingenious four-links mechanism enables robot programming easier ,control more precise.

Energy-saving arm design

- ◆ High-intensity aluminium alloy arm makes robot more speedily, also saves the power consume.
- Simple teaching and friendly Graphical HMI
- ◆ Less teaching point and graphical menu gives a much shorter start-up time, the initial operating on site

Product introduction

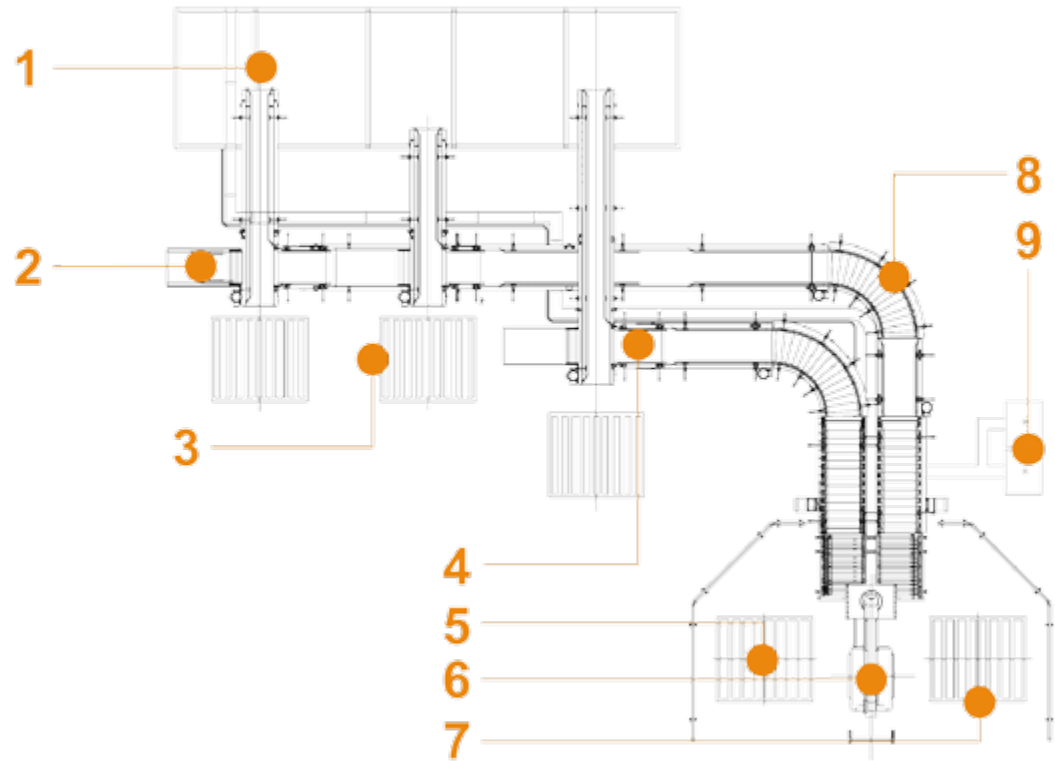
become easier and more efficient.

- ◆ Thanks to the high-precise simulation software, we are sure that the process will function correctly on a PC in advance. Collision detection prevents costly damage to your equipment.
- ◆ 3D simulation software, allows robot programming to be done on a PC in the office. Processes like layout creation, collision detection and motion simulation become easier and more efficient. This Shorten the initial operating time on site and increase overall productivity greatly.

Item		Specification		
		SMA-120	SMA-200	SMA-300
Controlled axis		4 axes (A. B. C. D)		
Installation		Floor mount		
Max.load Capacity (kg)		120	200	300
Handing Capacity (c/hr)		1400	1600	1000
Motion Range	Left and right	330°	330°	330°
	Up and down	2000mm	2300mm	2300mm
	Front and back	1300mm	1500mm	1500mm
	Manipulator	330°	330°	330°
Drive method		AC Electric servo drive by AC servo motor		
Repeatability		±0.5mm		
Power Consumption (Kw)		4	9.6	11.5
Weight (kg)		750	1100	1500
Installation environment		-10 ~ 45℃		
		85%RH		

Note 1) Under maximum capacity for Manufacturer develop, the actual stacking capability have related to distance, weight and other products site conditions.

Conveying System



- 1. Automatic packaging machine**

2. Rental unit

3. Pallet Pool

4. Climbing conveyor

5. Automatic Pallet Pool
- 6. Palletizing robot**

7. Pallet conveyor line

8. Right angle turn conveyor

9. Control cabinet

Application Area



We provide customized palletizing solutions to our word-wide customers.



Storage Project

Henan Richi Machinery Manufacturing Co., Ltd., specializing in the research,development, design, manufacturing and service of material storage technology, introduced a full set of the world's latest storage technology and equipment, and can provide various forms of the steel silo.

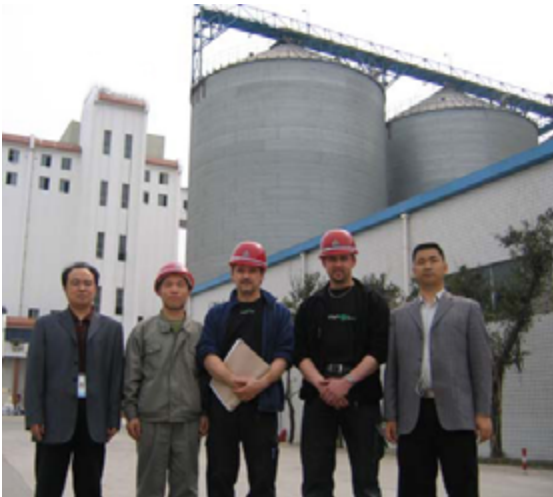
Now our company is engaged in providing one-stop turnkey projects including technology,construction design as well as automatic control system; and we also offer the manufacture,installation, commissioning and personnel training for auxiliary equipment about lifting, conveying,cleaning, magnetic separation, metering, drying, fumigation, refrigeration, ventilation, temperature and humidity measuring.

Richi has successfully established domestic and abroad silo projects in India, Sri Lanka,Egypt and many other countries. Its service has already extended to grain, feed, port, brewing,chemical, environmental protection, building materials, etc..



International Project

	Australia
Denmark	Sri Lanka
Canada	Serbia



Comprehensive Feed



15T/H Livestock feed Mill in Shanxi HuiMin



10T/H Pig Feed Mill Mill in Chongqing Dazheng



15T/H Sheep Feed Mill in Henan ShangDu



20T/H Chicken feed Mill Mill in Shanxi XinSiHai



25T/H Pig Feed Mill in Shanxi WoErKang



10T/H Pre Mixed feed Mill in YiHe HengTai

Comprehensive Feed



5T/H Pig Feed Mill in Changchun HuaMeng



10T/H Livestock Feed Mill in Henan Lican



10T/H Chicken feed Mill in Shanxi FuSen



20T/H Pig Feed Mill in Xinyang HuaBin



4×2000T Steel Silo in Henan RongDa



25T/H Duck Feed Mill in Henan XuRu